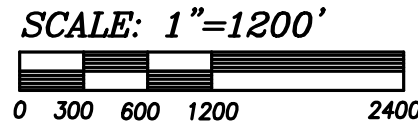
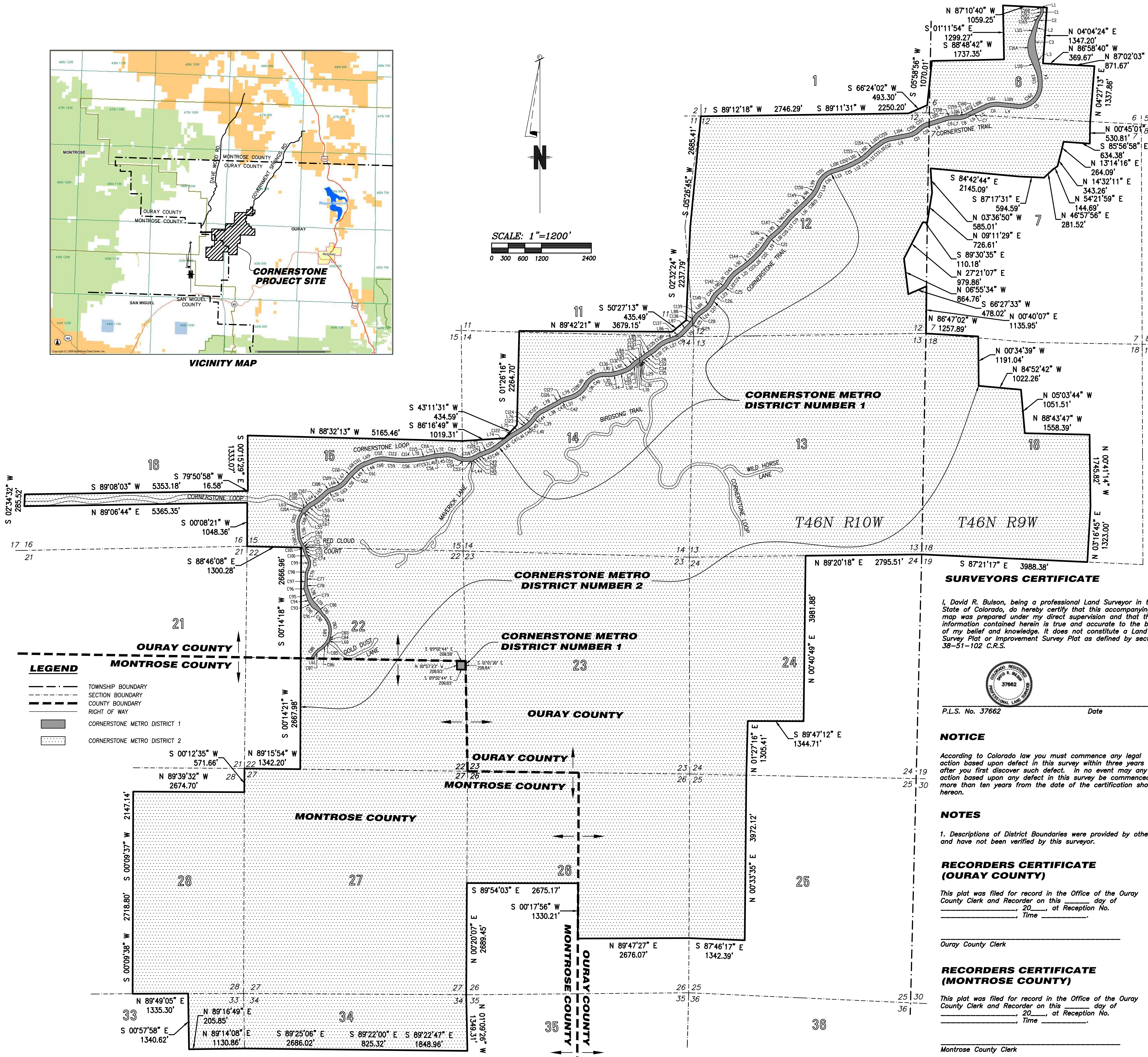


VICINITY MAP



0 300 600 1200 2400



LEGAL DESCRIPTION (CORNERSTONE METRO DISTRICT TWO)

PROPERTY DESCRIPTION FOR THE CORNERSTONE MONTROSE LLC PARCEL, A PARCEL OF LAND SITUATED IN SECTIONS 6, 7 & 18, TOWNSHIP 46 NORTH, RANGE 9 WEST, NEW MEXICO PRINCIPAL MERIDIAN AND IN SECTIONS 11, 12, 13, 14, 15, 16, 22, 23, 24, 25, 26, 27, 28, 33 & 34, TOWNSHIP 46 NORTH, RANGE 10 WEST, NEW MEXICO PRINCIPAL MERIDIAN, COUNTIES OF MONTROSE AND OURAY, STATE OF COLORADO, MORE PARTICULARLY DESCRIBED AS FOLLOWS:

BEGINNING at the section corner of Sections 1/2, 11/12, a B.L.M. monument in place; then N89°12'18"E along an existing fence line and the north section line of said Section 12 a distance of 2746.29' to the North 1/4 Corner of said Section 12, a rebar and cap (PLS 33645); then continuing along said fence line and said north section line N89°11'31"E a distance of 2250.20' to a rebar and cap (PLS 33645) at a fence corner; then leaving said section line and continuing along said fence line N66°24'02"E a distance of 493.30' to a rebar and cap (PLS 33645) at a fence corner; then continuing along a north fence line N05°58'56"E a distance of 1070.01' to a rebar and cap (PLS 33645) at a fence corner; then continuing along said fence line N88°48'42"E a distance of 1737.35' to a rebar and cap (PLS 33645) at a fence corner; then N01°11'54"W a distance of 1294.89' to a rebar and cap (PLS 33645) at a fence corner; then S87°04'47"E a distance of 903.00' to a rebar and cap (PLS 33645) at a fence corner; then S60°08'08"E a distance of 130.18' to a rebar and cap (PLS 33645) at a fence corner; then along a fence line S04°19'39"W a distance of 1282.06' to a rebar and cap (PLS 33645) at a point on an east/west fence line; then S86°58'40"E a distance of 413.92' along said fence line to a rebar and cap (PLS 33645); then S87°02'03"E a distance of 871.67' to the SE 1/16 corner of said Section 6 monumentized by a 20' witness corner to the north being a rebar and cap (LS12180); then S04°43'56"W a distance of 1344.40' to the E 1/16 a rebar and cap (LS 12180) of said Sections 6 & 7; then S00°46'04"W a distance of 528.13' to a rebar and cap (PLS 33645); then N86°13'07"W a distance of 634.67' to a rebar and cap (PLS 33645); then S11°53'52"W a distance of 256.30' to a rebar and cap (PLS 33645); then S54°21'59"W a distance of 144.69' to a rebar and cap (PLS 33645); then S46°57'56"W a distance of 281.52' to a rebar and cap (PLS 33645); then N87°11'31"W a distance of 594.59' to a rebar and cap (PLS 33645); then N84°37'51"W a distance of 2144.88' to a rebar and cap (PLS 33645); then S03°37'27"E a distance of 584.93' to a rebar and cap (PLS 33645); then S09°11'20"W a distance of 726.69' to 1/4 Corner of said Sections 12 & 7 a B.L.M. brass cap; then N89°24'32"W a distance of 110.06' to a rebar and cap (PLS 33645); then S27°21'30"W a distance of 980.20' to a rebar and cap (PLS 33645); then S06°56'25"E a distance of 864.70' to a rebar and cap (PLS 33645); then N66°27'55"E a distance of 482.62' to a rebar and cap (PLS 33645); then S00°52'50"W a distance of 1137.01' along the west section line of said Section 7 to the corner of said Sections 12/7, 13/18 a rebar and cap (LS 24299); then S86°44'20"E a distance of 1257.57' to a rebar and cap (PLS 33645); then S00°35'14"E a distance of 1190.93' to a rebar and cap (PLS 33645); then S84°52'43"E a distance of 1022.57' to a rebar and cap (PLS 33645); then S05°02'47"E a distance of 1051.40' to a rebar and cap (PLS 33645) then S88°43'38"E a distance of 1558.36' to a rebar and cap (PLS 33645) on the east 1/16 line of said section 18; then along said east 1/16 line S00°39'24"E a distance of 1742.89' to the SE 1/16 of said Section 18 a rebar and cap (LS 24299); then N87°16'18"W a distance of 4037.75' to the S 1/16 of said Sections 13 & 18 a rebar and cap (LS 24299); then S89°37'13"W a distance of 2858.76' to the C-S 1/16 of said Section 13 a rebar and cap (LS 24299); then S01°40'11"E a distance of 1342.78' to the 1/4 Corner of said Sections 13 & 24 a rebar and cap (PLS 33645); then S01°13'00"W a distance of 3964.36' to the C-S 1/16 of said Section 24 a rebar and cap (PLS 33645); then N89°38'39"W a distance of 1351.52' to the SW 1/16 of said Section 24 a rebar and cap (PLS 33645); then S00°33'38"W a distance of 1313.04' to the W 1/16 of said Sections 24 & 25 a rebar and cap (PLS 33645); then S00°06'47"W a distance of 3980.20' to the SW 1/16 of said Section 25 a rebar and cap (PLS 33645); then N87°50'12"W a distance of 1347.93' to the S 1/16 of said Sections 26 & 25 a rebar and cap (PLS 33645); then S89°45'51"W a distance of 2671.04' to the C-S 1/16 of said Section 26 a rebar and cap (PLS 33645); then N00°14'39"E a distance of 1330.02' to the Center 1/4 of said Section 26 a rebar and cap (PLS 33645); then N89°53'45"W a distance of 2676.36' to the 1/4 Corner of said Sections 27 & 26 a rebar and cap (PLS 33645); then S00°19'27"W a distance of 2688.32' to the section corner of said Sections 27/26, 34/35 an alum. cap (LS 25643); then S01°07'57"E a distance of 1348.35' to the N 1/16 of said Section 34 a rebar and cap (LS 25643); then N89°22'53"W a distance of 2673.32' to the CN 1/16 of said Section 34 a rebar and cap (LS 25643);

SURVEYORS CERTIFICATE

I, David R. Bulson, being a professional Land Surveyor in the State of Colorado, do hereby certify that this accompanying map was prepared under my direct supervision and that the information contained herein is true and accurate to the best of my belief and knowledge. It does not constitute a Land Survey Plot or Improvement Survey Plat as defined by section 38-51-102 C.R.S.



P.L.S. No. 37662 Date

NOTICE

According to Colorado law you must commence any legal action based upon defect in this survey within three years after you first discover such defect. In no event may any action based upon any defect in this survey be commenced more than ten years from the date of the certification shown herein.

NOTES

1. Descriptions of District Boundaries were provided by others and have not been verified by this surveyor.

RECORDERS CERTIFICATE (OURAY COUNTY)

This plot was filed for record in the Office of the Ouray County Clerk and Recorder on this _____ day of _____, 20____, at Reception No. _____ Time _____

Ouray County Clerk

RECORDERS CERTIFICATE (MONTROSE COUNTY)

This plot was filed for record in the Office of the Ouray County Clerk and Recorder on this _____ day of _____, 20____, at Reception No. _____ Time _____

Montrose County Clerk

then N89°25'06"W a distance of 2684.77' to the N 1/16 of said Sections 33 & 34 a rebar and cap (LS 28652); then S89°13'59"W a distance of 1336.08' to the NE 1/16 of said Section 33 a rebar and cap (LS 28652); then N01°00'21"W a distance of 1338.34' to the E 1/16 of said Sections 28 & 33 a rebar and cap (LS 28652); then along the south section line of said Section 28 S89°53'16"W a distance of 1333.94' to the 1/4 Corner of said Sections 28 & 33 a B.L.M. alum. cap; then N00°09'26"E a distance of 4867.22' to a rebar and cap (LS 24299); then along a fence line S89°38'22"E a distance of 2674.02' to a rebar and cap (LS 24299); then along a fence line N00°07'32"E a distance of 569.70' to the section corner of said Sections 21/22, 28/27 a B.L.M. brass cap; then along the north line of said Section 27 S89°17'19"E a distance of 1341.78' to the E 1/16 of said Sections 22 & 27 a rebar and cap (LS 3657); then N00°14'10"E a distance of 2665.49' to the CW 1/16 of said Section 22 a rebar and cap (LS 24299); then N00°12'02"E a distance of 2664.88' to the W 1/16 of said Sections 15 & 22 a rebar and cap (LS 12180); then N88°43'27"W a distance of 1298.03' to the Section Corner of said Sections 16/15, 21/22 a B.L.M. brass cap; then along the west line of said Section 15 N00°07'57"E a distance of 1049.61' to a rebar and cap (LS 24299); then S89°06'44"W a distance of 5365.46' to a point on the west line of said Section 16 a rebar and cap (LS 24299); then along the west line of said Section 16 N02°34'32"E a distance of 285.52' to the S 1/16 of said Section 16 a B.L.M. alum. cap; then N89°08'03"E a distance of 5353.18' to S 1/16 of said Sections 16 & 15 a rebar and cap (LS 12180); then N79°50'58"E a distance of 16.58' to a rebar and cap (PLS 33645) located at the intersection of the north/south & west fences; then N00°15'35"W along the said north fence line a distance of 1330.65' to a rebar and cap (PLS 33645) at the intersection of the south & east fences; then S88°32'09"E along said east fence line a distance of 5183.46' to a rebar and cap (PLS 33645) at an angle point in said east fence line; then S00°46'04"W a distance of 528.13' to a rebar and cap (PLS 33645); then N86°15'56"E a distance of 1018.56' to a rebar and cap (PLS 33645) at an angle point in said east fence line; then N43°09'55"E a distance of 434.73' to a rebar and cap (PLS 33645) at an angle point in said fence line; then N01°26'22"E a distance of 2262.30' to a rebar and cap (PLS 33645) at the intersection of a south and east fence line; then S89°43'35"E along said east fence line a distance of 3936.63' to a rebar and cap (PLS 33645) at an angle point in said fence line; then N44°09'34"E a distance of 103.34' to a rebar and cap (PLS 33645) at an angle point in said fence line; then N02°32'24"E along a north fence line distance of 2445.48' to a rebar and cap (PLS 33645) at an angle point in said fence line; then N05°26'45"E a distance of 2685.41' to section corner of said Sections 1/2, 11/12; which is the point of beginning, having an area of 5848.237 acres MORE OR LESS.

ALSO

PROPERTY DESCRIPTION FOR THE HUMPHRIES PARCEL, A PARCEL OF LAND SITUATED SECTION 18, TOWNSHIP 46 NORTH, RANGE 9 WEST, NEW MEXICO PRINCIPAL MERIDIAN AND IN SECTION 13, TOWNSHIP 46 NORTH, RANGE 10 WEST, NEW MEXICO PRINCIPAL MERIDIAN, COUNTY OF OURAY, STATE OF COLORADO, MORE PARTICULARLY DESCRIBED AS FOLLOWS:

BEGINNING at the section corner of Sections 13, 18, 24, & 19, a found stone monument in place; then S89°20'16"W along south section line of said Section 13 a distance of 2794.47' to a rebar and cap (PLS 33645); then leaving said south section line N01°40'11"W a distance of 1342.78' to a rebar and cap (LS 24299); then N89°37'13"E a distance of 2858.76' to a rebar and cap (LS 24299); then S87°16'18"E a distance of 4037.75' to a rebar and cap (LS 24299); then S02°55'49"W a distance of 1322.33' to the south line of said section 18 a rebar and cap (PLS 33645); then N87°21'40"W along said section line a distance of 3995.10' to the section corner of said Sections 13, 18, 24, & 19 which is the point of beginning, having an area of 208.876 acres MORE OR LESS.

LESS AND EXCEPT THOSE LANDS INCLUDED WITHIN CORNERSTONE METRO DISTRICT 1, FURTHER DESCRIBED AS FOLLOWS:

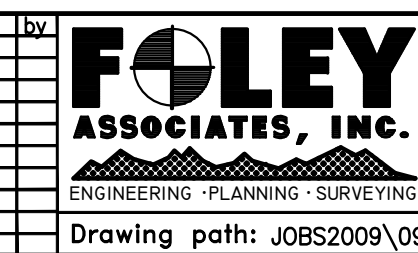
LEGAL DESCRIPTION (CORNERSTONE METRO DISTRICT ONE)

PROPERTY DESCRIPTION FOR A 1 ACRE PARCEL, A PARCEL OF LAND SITUATED IN SECTION 22, TOWNSHIP 46 NORTH, RANGE 10 WEST, NEW MEXICO PRINCIPAL MERIDIAN, COUNTY OF MONTROSE, STATE OF COLORADO, MORE PARTICULARLY DESCRIBED AS FOLLOWS:

BEGINNING at the 1/4 Corner common to Section 22 and Section 23 Township 46 North, Range 10 West, New Mexico Principal Meridian monumentized by a rebar and cap (3657) on the Montrose and Ouray County Line; then along said county line S01°01'30"E a distance of 208.83' to a rebar and cap (PLS 33645); then leaving said county line N89°02'44"W a distance of 208.83' to a rebar and cap (PLS 33645); then N00°57'23"W a distance of 208.83' to said county line; then along said county line S89°02'44"E a distance of 208.58' to the point of beginning, having an area of 1.000 acres MORE OR LESS.

Amended Boundary Plat of Cornerstone Metro Districts Located Within Montrose and Ouray Counties, State of Colorado

Project Mgr:	DB	Rev.	description	date	by
Technician:	FD				
Checked by:					
Start date:	12/2009				



970-728-6153 970-728-6050 fax
P.O. BOX 1385
125 W. PACIFIC, SUITE B-1
TELLURIDE, COLORADO 81435
Drawing path: J08S2009\09007.dwg Sheet 1 of 1 Project #: 09007

TOGETHERWITH

A parcel of land located within Sections 11, 12, 14, 15 and 16 Township 46 North, Range 10 West, and within Sections 6 and 7 Township 46 North, Range 9 West, of the New Mexico Principal Meridian, further described as follows:

BEGINNING at the section corner of Sections 1/2, 11/12, a B.L.M. monument in place, said point being the POINT OF BEGINNING;

thence S 87°10'21" E a distance of 65.58 feet; thence 232.15 feet along the arc of a non-tangential curve, concave to the west, having a central angle of 57°49'53", a radius of 230.00 feet, and a chord of 222.42 which bears S 07°06'56" W;

thence 191.59 feet along the arc of a tangential curve, concave to the northwest, having a central angle of 11°33'19", and a radius of 950.00 feet; thence S 59°06'09" W a distance of 94.88 feet; thence 132.74 feet along the arc of a tangential curve, concave to the southeast, having a central angle of 16°32'03", and a radius of 460.00 feet;

a radius of 540.00 feet; thence 30.96 feet along the arc of a reverse tangential curve, concave to the west, having a central angle of 88°41'37", and a radius of 20.00 feet; thence N 34°16'19" E a distance of 122.68 feet; thence N 31°43'58" E a distance of 100.67 feet; thence 30.17 feet along the arc of a non-tangential curve, concave to the north, having a central angle of 88°25'55", a radius of 20.00 feet, and a chord of 27.39 which bears N 84°31'37" E;

thence 79.33 feet along the arc of a tangential curve, concave to the northwest, having a central angle of 09°52'50", and a radius of 460.00 feet; thence N 34°16'19" E a distance of 122.68 feet; thence 202.91 feet along the arc of a tangential curve, concave to the southeast, having a central angle of 20°45'39", and a radius of 560.00 feet;

Table with 3 columns: Line #, Direction, Length. Contains survey data for lines 1 through 128.

Table with 3 columns: Line #, Direction, Length. Contains survey data for lines 129 through 256.

Table with 3 columns: Line #, Direction, Length. Contains survey data for lines 257 through 384.

Table with 5 columns: Curve #, Length, Radius, Delta, Chord Bearing, Chord Distance. Contains curve data for curves 1 through 128.

Table with 5 columns: Curve #, Length, Radius, Delta, Chord Bearing, Chord Distance. Contains curve data for curves 129 through 256.

Table with 5 columns: Curve #, Length, Radius, Delta, Chord Bearing, Chord Distance. Contains curve data for curves 257 through 384.

Amended Boundary Plat of Cornerstone Metro Districts Located Within Montrose and Ouray Counties, State of Colorado

Table with 4 columns: Project Mgr, Technician, Checked by, Start date. Contains project management information.



970-728-6153 970-728-6050 fax P.O. BOX 1385 125 W. PACIFIC, SUITE B-1 TELLURIDE, COLORADO 81435